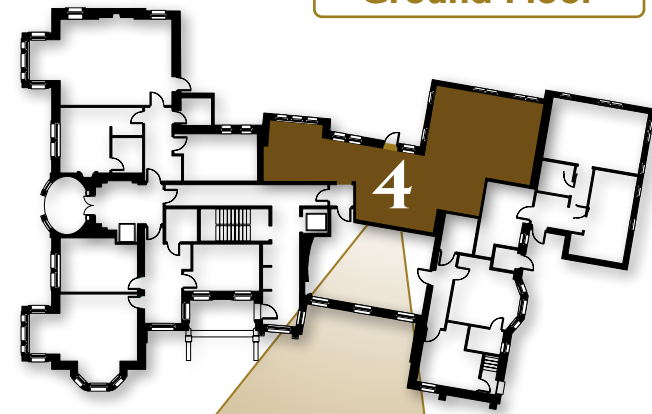


# APARTMENT 4

This 2 bedroom faces Scalesceugh Hall's peaceful and secluded courtyard and has been created from the original country house kitchens. It benefits from high ceilings, decorative coving and ceiling roses. It also benefits from a large kitchen and a large private patio at the back.



Ground Floor



**TOTAL AREA**  
79m<sup>2</sup> / 850ft<sup>2</sup>

**LIVING AREA**  
6500mm x 5420mm  
21' 4" x 17' 9"

**KITCHEN**  
2800mm x 2800mm  
9' 2" x 9' 2"

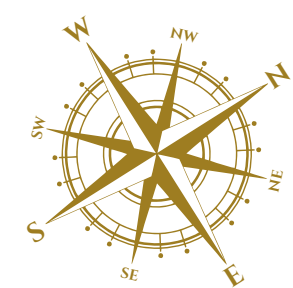
**MASTER BEDROOM**  
3520mm x 3670mm  
11' 5" x 12' 0"

**BEDROOM 2**  
3250mm x 4000mm  
11' 5" x 13' 1"

**BATHROOM**  
2650mm x 1800mm  
8' 8" x 6' 0"

**ENSUITE**  
2550mm x 1400mm  
8' 4" x 4' 7"

**PATIO**  
4800mm x 5800m  
15' 7" x 19' 0"



S - Built-in storage (optional)