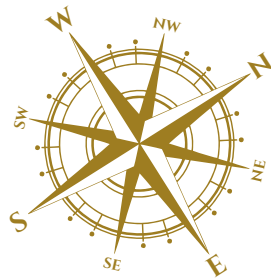
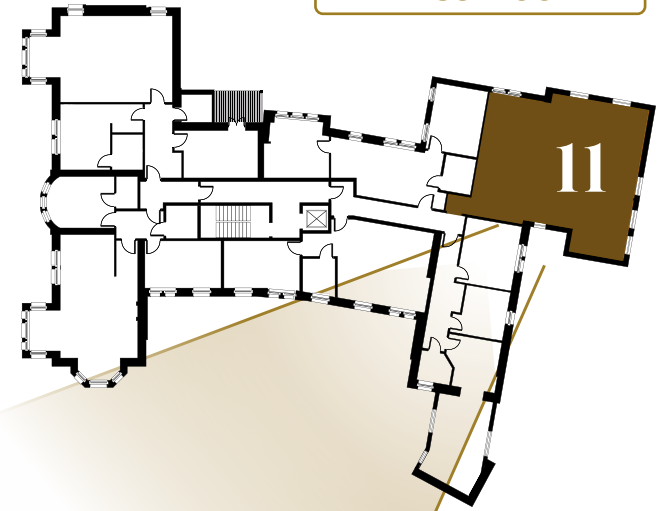


TOTAL AREA90m² / 969ft²**LIVING AREA**6100mm x 3600mm
20' 0" x 12' 0"**KITCHEN**3000mm x 2560mm
10' 0" x 8' 5"**MASTER BEDROOM**4000mm x 3350mm
13' 2" x 11' 0"**BEDROOM 2**3600mm x 3600mm
12' 0" x 12' 0"**HALL**5000mm x 1250mm
16' 5" x 4' 1"**BATHROOM**2300mm x 1700mm
7' 7" x 5' 7"**ENSUITE**2420mm x 1820mm
8' 0" x 6' 0"**LOBBY**3400mm x 2550mm
11' 2" x 8' 4"

APARTMENT 11

This 2 bedroom apartment combines views over the Solway and Scalesceugh Hall's woodland and includes some unique features such as sandstone archways, built-in cupboards and decorative plaster. It also benefits from a large lobby which can be used as a study or hobby room

First Floor**S** - Built-in storage (optional)